

WORKING WITH WILSON MOTORSPORT

*The Full Service
Race Facility
Design & Development Team*



“Developing Tracks for the Business of Motor Sport”

DESIGNING RACE TRACKS FOR THE BUSINESS OF RACING!



Wilson Motorsport Inc.



- **Wilson Motorsport** is a world renowned motor sports facility design and operations company that is the recognized leader in the development of multiple use motor sports facilities.
- **Wilson Motorsport** provides full service race facility design, development, construction consultancy and facility operations services to race track developers around the world.
- **Wilson Motorsport** has 40 years of experience in the business of motorsports and is the world's only track design company with hands-on experience in track management, track design, track construction, race event management, race series development and management and the promotion and organization of World Championship F1, Superbike, FIA Endurance Sports Cars, major international motorcycle events, Indy Car, ALMS, Grand-Am and Trans-am races and has a 50 year history of competing in events around the world.
- **Wilson Motorsport** brings this wide breadth of motor sports experience, expertise and skill in their development of facilities designed to succeed in the business of racing.
- **Wilson Motorsport** offers a unique and flexible approach to race facility design that allows their customers access to a single comprehensive development service or to select the services they need on an individual basis.

Wilson Motorsport Inc.

HOW DO WE DESIGN AND BUILD A ROAD COURSE?

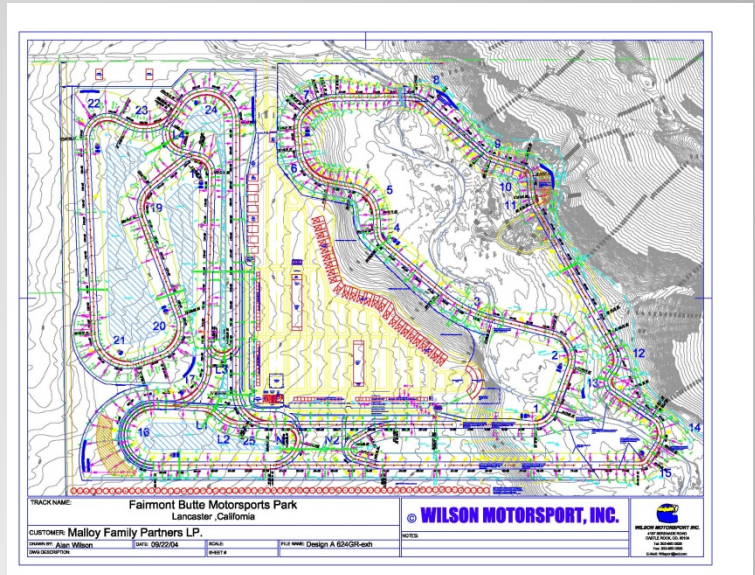


Wilson Motorsport Inc.



"Anyone can draw a race track..."

..... BUT IT TAKES AN EXPERIENCED TEAM OF PROFESSIONALS TO DESIGN AND BUILD A RACE FACILITY THAT REALLY WORKS"



Wilson Motorsport Inc.

THE PRIDE AND THE PASSION

Building a race track requires engineering expertise, financial understanding, construction experience and knowledge

But designing a race track is an art!

Racing is emotion. It is skill. It is challenge. It is fear. It is exhilaration. It's the thrill of success and the abject disappointment of not winning.

Racing is a passion!

The best race track will always be the work of someone who is passionate about the emotions of the sport, who understands the challenges and who will instill these into the ultimate race track design.

Artist of the Apex

"Flow is crucial The driver should approach the corner with anticipation that becomes trepidation as he gets into the braking zone. Then comes the determination to get it spot on; then when he gets to the apex there is a sense of satisfaction because he's hit it right and then there is pure adrenaline as he accelerates out and looks forward to doing it again..... Its all about the flow".

Alan Wilson in AutoWeek Magazine



Wilson Motorsport Inc.

THE DESIGN PROCESS

10 STEPS TO SUCCESS

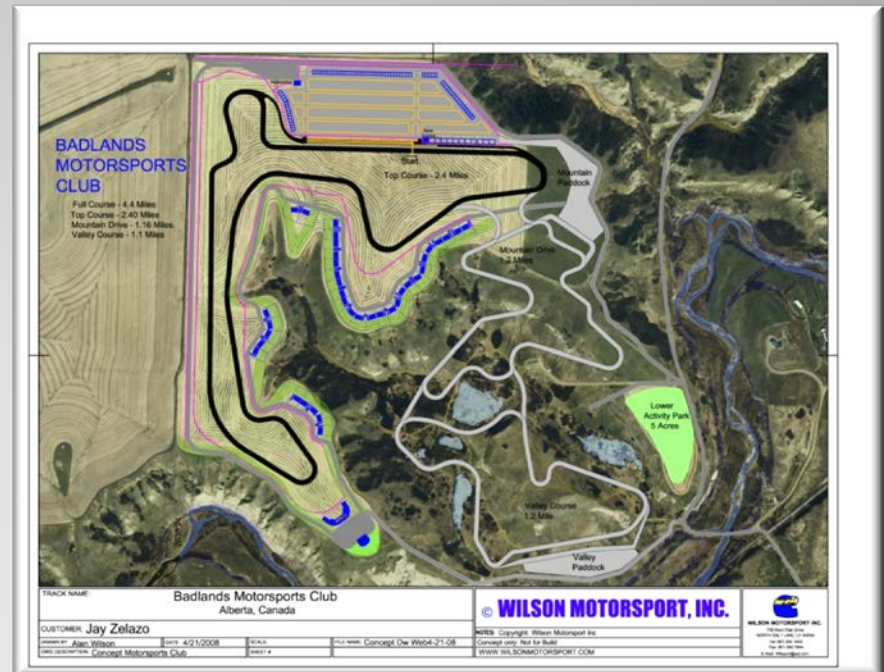
- | | |
|----------|---|
| Step 1: | UNDERSTANDING THE PROJECT |
| Step 2: | UNDERSTANDING THE SITE |
| Step 3: | DEFINING THE COMPONENT ELEMENTS OF THE FACILITY <ul style="list-style-type: none">- a) Operational Elements- b) Spectator Elements |
| Step 4: | THE CONCEPT PLAN |
| Step 5: | THE DETAIL DESIGN PLAN |
| Step 6: | DESIGN INTERFACE WITH ENGINEERING |
| Step 7: | ENGINEERING INTERFACE WITH SPECIALIST SERVICES |
| Step 8: | CONSTRUCTION MANAGEMENT AND FACILITY CONSTRUCTION |
| Step 9: | DESIGN INTERFACE WITH CONSTRUCTION |
| Step 10: | OPERATIONS, EVENT AND FACILITY MANAGEMENT SUPPORT |

Wilson Motorsport Inc.

STEP 1: UNDERSTANDING THE PROJECT

It is crucial that we understand everything about the project. We will begin by reviewing the project concept with the developer.

- Why is the race facility being built?
- What is the business plan?
- Who are the key groups involved?
- What is the scope of the project?
- Who are the project's customers? – Spectators, Race Competitors, Sanctioning Bodies, Non-Racing Enthusiasts, Industry, Corporations?
- What are the proposed budgets for the development of the project?



Wilson Motorsport Inc.

STEP 2: UNDERSTANDING THE SITE

We will visit the site to understand the nature of the land, any limitations that may effect the design and it's potential to make a great trace track

- Site Boundaries
- Site Topography
- Water and Drainage Issues
- Environmental Issues
- Neighborhood Impacts
- Access Issues
- Services and Infrastructure
- Site Limitations
- Site Characteristics
- How to unleash the site's potential



The race track should blend into the site and should retain as much of its natural harmony as possible

STEP 3a: IDENTIFY THE OPERATIONAL ELEMENTS

A race track can incorporate many different operating facilities, which may differ significantly in design needs and in cost, depending how the track is to be used.

- COMPETITION ELEMENTS: Main Race Tracks, Kart Tracks, Auto-Cross areas, Drifting Courses, Off-Road, Moto-X & Super-Moto courses.
- RACE MANAGEMENT BUILDINGS: Race Control, Timing & Scoring, Pits, Pit Lanes, Briefing Rooms, Emergency Services, Medical Center, CCTV Equipment.
- COMPETITOR FACILITIES: Garages, Wash Bays, Gas Stations, Tech Areas, Showers, RV Parking, Power and Communications.
- DRIVER EDUCATION: High Performance Driving School, Classrooms, Workshops, Skid Pad, Track Layout.
- ADMINISTRATION FACILITIES: Admin Building, Registration, Ticketing, Security, Site Maintenance, Warehousing, Equipment Storage



Wilson Motorsport Inc.

STEP 3b: IDENTIFY THE CUSTOMER ELEMENTS

*Customers include the drivers, teams, spectators, corporate, TV and media
..... their needs must be incorporated into the design of the facility.*

- SPECTATOR FACILITIES - Grandstands, Ticketing , Entrances and Exits, Parking, Public Toilets and Facilities, Restaurants, Open Spaces, Access Ways.
- SPECTATOR SERVICES & ENTERTAINMENT – Expo areas, Playgrounds, Entertainment Centers, Retail Shops.
- CORPORATE FACILITIES – Hospitality Suites, Hospitality Areas, Conference Facilities.
- CLUBHOUSE FACILITIES - Restaurants, VIP Rooms, Convention Space.
- INDUSTRIAL – Team Garages, Warehouses, Business Centers, Workshops.
- RESIDENTIAL – Condominiums, Hotels, Collector Garages.

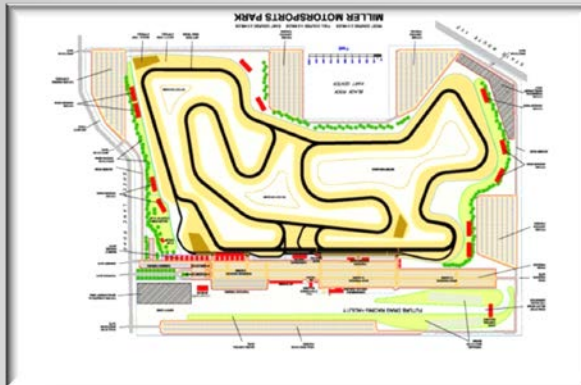


Wilson Motorsport Inc.

STEP 4: THE CONCEPT PLAN

Define what the facility should become

- DESIGN REVIEW: Wilson Motorsport will review all previous design layouts.
- CONCEPT PLAN: Wilson Motorsport will prepare a Preliminary Master Concept Plan.
- CONCEPT REVIEW: The Developer will review the Preliminary Concept Plan with Wilson Motorsport.
- FINAL CONCEPT PLAN: Wilson Motorsport will prepare the Final Concept which becomes the basis of the Detail Design Plan.



Wilson Motorsport Inc.

STEP 5: THE DETAIL DESIGN PLAN

Moving from the Concept Plan to Detail Design

- The CONCEPT PLAN becomes the basis for the Detail Design drawings.
- **DETAIL DESIGN DRAWINGS:** The Detail Design drawings determine the final track design and include all track safety, operational elements, base grading, track characteristics and associated elements and determine the phased construction plan.
- **ENGINEERING DRAWINGS:** The Detail Design Plan is passed on to the engineers, architects and other design contractors to develop full construction drawings, based on the Wilson Motorsport Detail Design Plan.

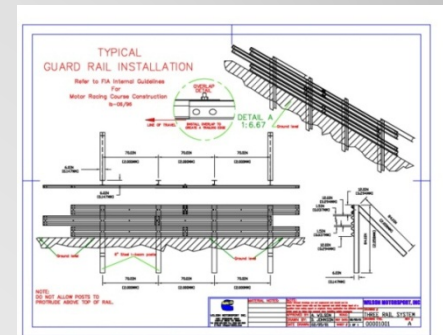
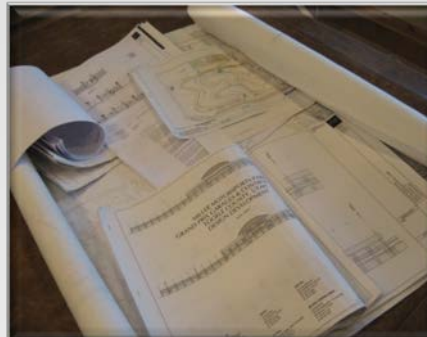


Wilson Motorsport Inc.

STEP 6: DESIGN INTERFACE WITH ENGINEERING

Drawings progress from Concept Layouts to Final Construction Plans

- The Detail Plan Design becomes the basis for ALL Engineering and Construction drawings.
- Detail Engineering Plans will be developed and drawn by contracted engineers and architects. These include grading, environmental control, government submissions and final construction plans.
- Wilson Motorsport provides detail information, design specifications and operational requirements for these engineering activities and will interact with the engineers and architects throughout the design phase.



Wilson Motorsport Inc.

STEP 7: ENGINEERING INTERFACE WITH SPECIALIST SERVICES

The success of any major project is a factor of the knowledge available to the developer from industry specialists Wilson Motorsport, through their relationships with industry specialists, have access to all the expertise needed to ensure the ultimate success of the project.

- The modern race track incorporates many different types of facility and the use of specialist equipment requiring the support of unique industry services, many of which are provided by independent companies. Wilson Motorsport has valuable associations with experts in every field of race track operations and can bring their experience and expertise into the project.



The modern Race Control center is a complex facility that is the communications and control headquarters of the race event.

STEP 8: CONSTRUCTION MANAGEMENT CONSULTANCY

Wilson will maintain a constant working relationship with the engineers and construction team throughout the construction process.

- Wilson Motorsport has been involved in the construction of 40 race tracks and in the design and development process of many other facilities.
- Wilson Motorsport will utilize the experience and expertise gained with these facilities to provide the developer with on-going consultancy throughout the construction process
- Wilson Motorsport has a wide range of consultants and contacts in all aspects of race track construction and can bring their expertise to resolve any issues which may arise during constructions

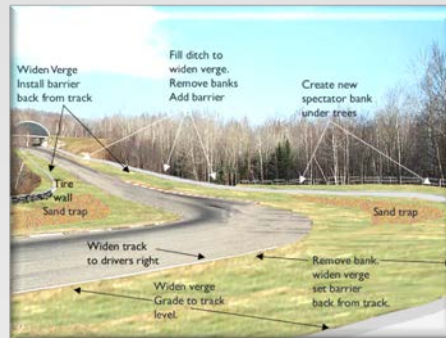


Wilson Motorsport Inc.

STEP 9: DESIGN INTERFACE WITH DESIGN AND CONSTRUCTION

Design interface continues throughout construction

- Wilson Motorsports provides on-going detail design input throughout the engineering and architectural development and design phases of the project.
- Wilson Motorsport conducts site reviews during construction to ensure that design specifications and quality is maintained.
- Wilson Motorsport reviews ALL safety elements during installation to ensure maximum application of safety standards.



Wilson Motorsport Inc.

STEP 10: OPERATIONS, EVENT AND FACILITY MANAGEMENT SUPPORT

Wilson Motorsport has 30 years of experience in running major race facilities, race series and race events.

- OPERATIONS CONSULTANCY: Wilson Motorsport can provide operations training and oversight for all aspects of the developing operation.
- EVENT CONSULTANCY: Wilson Motorsport can provide advice and assistance in the development of the facility's event activities.
- MANAGEMENT AND STAFF: Wilson Motorsport can provide advice and support to the developer while he establishes his management team prior to the beginning of business activities.
- OPERATIONS SUPPORT: Wilson Motorsport is available to provide advice and assistance to the developer through the first year of operations.

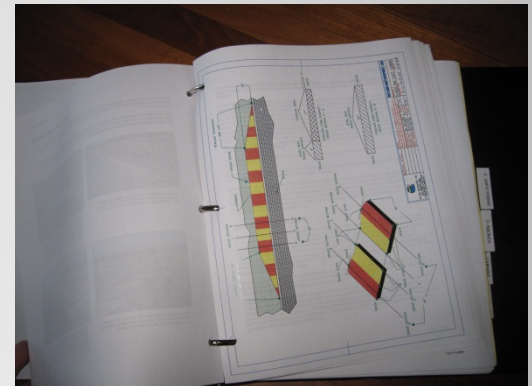
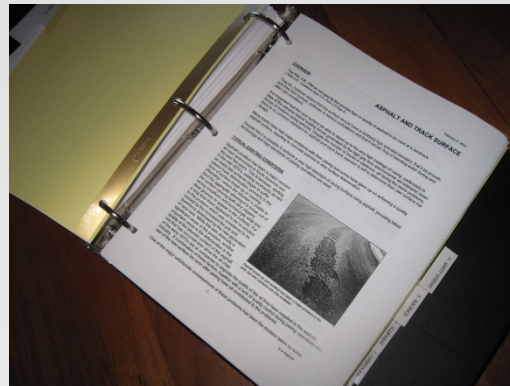


Wilson Motorsport provides facility, operations, management and event development support to the developer as an integral part of their race facility design services.

WILSON MOTORSPORT INC., DESIGN, CONSTRUCTION AND OPERATIONS GUIDELINES

40 years of Experience and Expertise incorporated in the ultimate track construction manual

- The copy write protected Wilson Motorsport Design Manual consists of more than 300 pages of detailed information, specific designs, specifications, guidelines and other crucial information gained from 40 years of active track design, development and management
- The Guidelines will be made available to the track developer engineers and construction team as a source of reference for most of the issues that they are likely to encounter in undertaking their tasks of building the race facility.



Wilson Motorsport Inc.

CONTRACTS AND AGREEMENTS

- Wilson Motorsport Inc., is a fee based company. Work is not undertaken on a speculative basis and the companies do not trade their services for ownership in a project.
- Wilson Motorsport Inc., requires that contracts are in place and that appropriate deposits, initial payments or contract fees are paid before undertaking any work on the project.
- Contracts may be with the individual companies, or as part of a comprehensive overall agreement with Wilson Motorsport, depending on the scope of services required by the developer and will be subject to individual negotiation as may be appropriate.
- Contracts will specify the precise services to be provided.
- Services differ in detail with every project and may not include all the services identified in this presentation.



THANK YOU



Wilson Motorsport Inc.

www.wilsonmotorsport.com



Wilson Motorsport Inc.



Wilson Motorsport Inc.